

SnowGuardWarehouse.com

Snow Guards and Rails for All Types of Roofs

Joseph Jenkins, Inc., 143 Forest Lane, Grove City, PA 16127 USA: Ph: 814-786-9085
Toll Free: 866-641-7141; Fax: 814-786-8209 Email: mail@josephjenkins.com

1.0 PRODUCT NAME

BERGER RTMINI

Clear Plastic Snow Guard

2.0 MANUFACTURER

Berger Building Products, Inc

805 Pennsylvania Blvd.

Feasterville, PA 19053

info@bergerbuildingproducts.com

(215) 355-1200

(800) 523-8852

(215) 355-7738 (FAX)

3.0 DESCRIPTION

Basic Use: BERGER RTMINI Clear Plastic Snow Guard is a device designed for the prevention of damage caused by the sliding of snow and ice on metal roofs.

Limitations: When installing a BERGER Clear Plastic Snow Guard using only SB-190* adhesive/sealant, allow 28 consecutive days of at least 50°F or warmer to permit the adhesive/sealant to cure completely. In some extreme cases, temporary measures may need to be employed to hold the snow guard in place until the adhesive begins to cure.

Style: BERGER RTMINI is designed to attach to the flat metal panel surface. It is ideal for channel drain metal roofs. Each is designed with a slot on the blade to accept a custom emblem or color chip. These chips can be cut and fitted in the field.

4.0 INSTALLATION

Mechanical Attachment

BERGER RTMINI Snow Guards have pre-drilled holes to accommodate #10 Type A self-tapping fasteners (flat or oval head).

Adhesive Attachment

Before installing, all contact surfaces should be wiped with Isopropyl Alcohol and allowed to dry completely. The adhesive/sealant should be applied in a manner that will completely coat the underside of the device before positioning it on the roof surface. After adhesive/sealant is applied, sufficient compression should be created to squeeze the adhesive/ sealant out around the perimeter. Also, a bead of the same material should be applied around the base of the guard to create a waterproof joint that will be free of gaps and air pockets

5.0 AVAILABILITY, COST & TECHNICAL SERVICE

BERGER Mini Clear Plastic Snow Guards are in stock and ready for immediate shipment. Call (800) 523-8852 for cost and additional information or technical assistance.

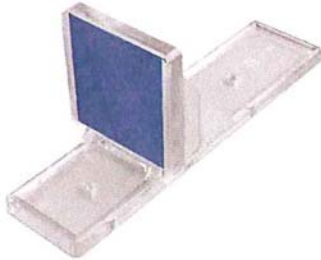
6.0 WARRANTY

Berger Building Products, Inc (BBPI) warrants that the products it manufactures shall be free from material defects. Should any of the products prove defective, the obligation of BBPI under this warranty shall be limited to replacement of the defective product or at our option the cost of the product originally shipped by Berger. This warranty is expressly in lieu of all other warranties expressed or implied including the warranties of merchantability and fitness for a particular purpose. There are no warranties, which extend beyond the description on the face hereof. BBPI in no event, whether claim is based on warranties, contract negligence or otherwise, is liable for incidental or consequential damages. Berger Building Products, Inc (BBPI) will not be responsible for misapplication or modification of product, incorrect material or defects that were obvious at time of installation. Any consequential damage, schedule delays, additional labor, and or equipment rental costs will not be BBPI responsibility. Any BBPI product warranty claim is limited solely to Berger Building Products, Inc

Product Properties		BERGER RTMINI Snow Guard	
Material		Polycarbonate with UV Stabilizers	
Color		Clear	
Weight per piece		.1375 lbs.	
Pieces per box		100	
Dimensions (W x L x H)		1.5" x 6" x 2.5"	
Tensile	Strength	ASTM D-638	730 Kg/cm ²
	Elongation	ASTM D-638	140 %
	Strength	ASTM D-790	940 Kg/cm ²
	Modulus	ASTM D-790	23100 Kg/cm ²
Impact Strength		ASTM D-256	90 Kg.cm/cm
MFI (300° x 1.2 Kg)		ASTM D-1238	11.2 G/10 min

*SB-190 Everseal & SB-1800 Everflex are products of Surebond, Inc.

BERGER Mini Clear Polycarbonate Snow Guard Installation Instructions



The **RTMINI** can be installed using adhesive sealants, mechanical fasteners or a combination of both. Its primary design is to accommodate ribbed and flat metal.

Adhesive Recommendation: BERGER recommends Surebond Everseal (SB-190)* when using adhesive to install the **RTMINI**. This product has been proven in the industry for this particular use. Strict compliance with the manufacturer's recommendations regarding environment conditions and surface preparation will assure optimum performance. SB-190 requires 28 days (672 consecutive hours) of 50 degrees Fahrenheit, or warmer temperatures to fully cure to 2000psi shear tensile strength. Do not use adhesive if rain is forecast within 24 hours.

Adhesive Attachment: All surface areas that are to come in contact with sealant are to be wiped with isopropyl alcohol and allowed to dry. Adhesive or sealant should be applied so as to completely cover the underside of the device before it is positioned, and sufficient compression should be created to squeeze adhesive out around its perimeter and a bead of the same material should be applied around the base to create a waterproof joint free of gaps and air pockets. One 10.3 oz tube of sealant will adhere approximately 14 guards. It should be noted that under certain conditions, temporary measures may need to be employed to hold the snow guard in place until initial set of adhesive has taken place.

Mechanical Attachment: The **RTMINI** is provided with three pre-drilled holes to accommodate a #10 Type A self-tapping fastener, (flat or oval head) with a neoprene washer for a watertight seal. The snow guard needs to be fastened into a structural member, rafter or purlin at least 1.5" through each screw point. Fastener selection should be governed by substrate and anticipated loads; stainless steel or corrosion resistant fasteners should be insisted upon.

"Screw and Glue" Attachment: The **RTMINI** may also be installed using a combination of fasteners (screw) and adhesive (glue) or a suitable high-quality silicone sealant.

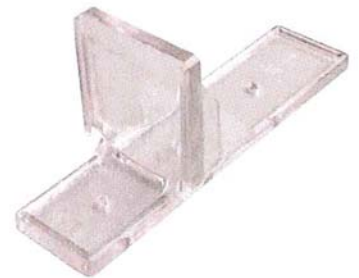
"Snowflake" slot: Each **RTMINI** is designed with a slot on the blade to accept a custom emblem or color chip. These chips can be cut and installed in the field. Slot dimensions: width 1.850"/1.860", height 2.000"/2.030" and thickness .016"/0.050".

Snow guard Placement will vary from region to region and will be influenced by roof pitch, as well as the lengths of runs and spacing between seams. Local custom may not be the best guide as to placement, and additional recommendations can be found in SMACNA and other published industry standards. Ultimately, placement should be determined by a qualified design professional.

Berger does not warrant adhesive failure. The adhesives are offered for the convenience of the user who assumes full responsibility for its use. These adhesives are used throughout the industry for adhering snow guards with successful results utilizing the directions of the adhesive manufacturer. **Adhesive failure does not constitute Berger products defect and is not the responsibility of Berger.**

Berger Building Products, Inc (BBPI) warrants that the products it manufactures shall be free from material defects. Should any of the products prove defective, the obligation of BBPI under this warranty shall be limited to replacement of the defective product or at our option the cost of the product originally shipped by Berger. This warranty is expressly in lieu of all other warranties expressed or implied including the warranties of merchantability and fitness for a particular purpose. There are no warranties, which extend beyond the description on the face hereof. BBPI in no event, whether claim is based on warranties, contract negligence or otherwise, is liable for incidental or consequential damages. Berger Building Products, Inc (BBPI) will not be responsible for misapplication or modification of product, incorrect material or defects that were obvious at time of installation. Any consequential damage, schedule delays, additional labor, and or equipment rental costs will not be BBPI responsibility. Any BBPI product warranty claim is limited solely to Berger Building Products, Inc

*Surebond Everseal is a product of Surebond, Inc.



BERGER BUILDING PRODUCTS, INC.
805 Pennsylvania Boulevard ● Feasterville, PA 19053
215-355-1200 or 1-800-523-8852 ● Fax: (215) 355-7738
Website: www.bergerbuildingproducts.com
E-mail: info@bergerbuildingproducts.com